

A woman with voluminous, curly brown hair is smiling and looking down at a smartphone in her hands. She is wearing a light pink blazer over a white top. A black bag strap is visible over her shoulder. The background is a plain, light-colored wall.

The modern
digital workspace
is here for you:
Citrix Workspace™.

I just want to get something done today!

— A knowledge worker somewhere

As consumers, we live in a digitally connected world, where we have every device, app and bit of information we need at our fingertips. The same should be true at work. However, research shows us that employee engagement is impeded by a digital experience that is far from smooth.

Context switching, signing in and out of apps, the lack of remote access, and constantly searching for apps and information are just a few of the impediments that erode engagement and productivity.

Given the fact that an organization's workforce represents 60% of its operating expense, it's staggering to think that employees spend only 43% of their time concentrating on their core competencies.

Citrix Workspace can help you solve this problem.



Sources:

“Overcome the Technology Distraction That Costs You Organizational Productivity,” featuring research from Forrester, sponsored by Citrix (2018)

Workfront “State of Work 2020” Report (October 2019)



A Great Employee Experience Drives Better Productivity & Engagement.

Whether enterprise users need to use ten apps or 50 to do their jobs, they all will appreciate the frustration-free experience that Citrix Workspace provides.

It starts with single sign-on authentication, continues with intelligence features that simplify workflows, and brings it home — sometimes literally — with a cloud-based dashboard that goes where they go.

Source: Workfront "State of Work 2020" Report (October 2019)



91%

Of workers are proud of the work they do.

89%

Believe their role matters.



You Can't Have EMPLOYEE ENGAGEMENT with Constant Distractions.

Technology that streamlines workflows and cuts out clutter clears the way for employees to stay focused and engaged in their work. However, many organizations are encumbered by tools that are complex and counterintuitive.

These tools impede collaboration, create unnecessary urgencies with constant notifications, and divert attention away from the work that delivers the highest business value.

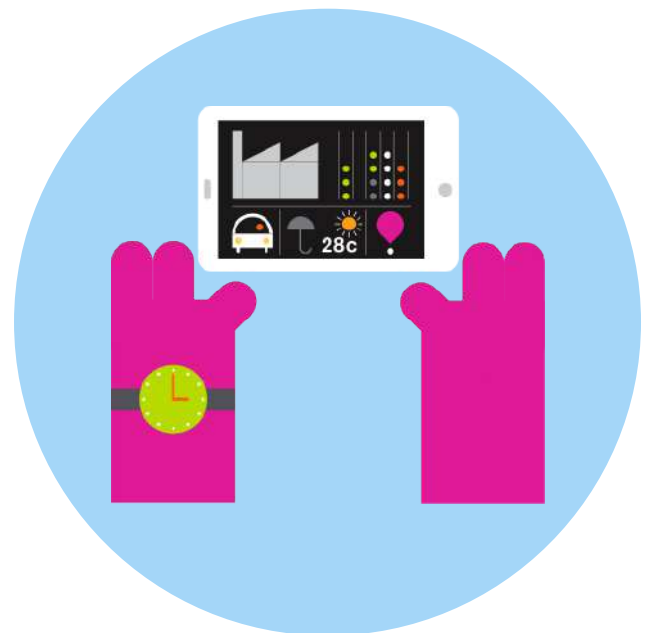
Source: Workfront "State of Work 2020" Report (October 2019)

91%

Crave modern technology solutions.

84%

Say businesses are missing opportunities by not moving to more modern solutions.



EMPLOYEE EXPERIENCE and PRODUCTIVITY Go Hand-in-Hand.

Employees can work for days and accomplish very little if the time is consumed with switching applications, searching for content across multiple locations, and using countless logins with multiple passwords. When the workforce feels stymied by the overall digital experience, it's time for a change.

Easy access to necessary information ●

Ability to work from anywhere ●

Ease of use ●

Consumer-like user experience ●

Choice of devices ●

Respondents rank the top five technology enablers that contribute to a great employee experience

Source:

The Experience of Work: The Role of Technology in Productivity and Engagement
An Economist Intelligence Unit Report sponsored by Citrix (June 14, 2019)



Engage Like HR. Empower Like IT.

The modern IT leader has something in common with human resources: the goal of delivering a high-quality employee experience. The best way you can achieve this is by implementing modern digital workspace technology throughout your enterprise — and Citrix Workspace is the most unified, advanced and user-friendly platform you'll find.

The Most Popular User Features of Citrix Workspace.

Explore how Citrix Workspace learns, remembers, reminds and streamlines. All Citrix Workspace features function the same way on mobile devices and desktops, as well as on your company's current web-based interface.



Single Sign-On (SSO)

With SSO, users can securely access all apps, desktops and files from their computers or devices with one password. This function is supported across all mobile, SaaS and web apps.



One Dashboard

Citrix Workspace enables employees to run multiple applications and desktops simultaneously. Now there is a taskmaster to streamline it all.



Follow Me Sessions

Users are able to move between devices and automatically connect to all of their sessions just by signing in. They access work seamlessly as they move from their desks to the conference room or from mobile devices to laptops.



Secure Remote Access

Geographically diverse employees have never been better connected, whether they are working from home, from an airport or from the client's office in Zurich.



Universal Search

A consumer-like search experience empowers users to easily locate content across all files and apps.



Workspace Intelligence

Work is simplified with virtual assistance that guides users, organizes work and automates tasks such as approvals and escalations, so employees save time with fewer logins, clicks and swipes. Users can also personalize how they prioritize information, whether by date, relevance or application.



Recents and Favorites

Like the most intuitive consumer apps, Citrix Workspace saves time by displaying employees' recently opened apps, desktops and files. Citrix Workspace also offers the option of allowing users to add most-used apps to their Favorites.



Microapp Integration

This new platform configuration syncs data from systems of record to streamline functionality from complex enterprise applications. More than 100 out-of-the-box microapps are available.



Microapp Page Builder

Rather than forcing employees to navigate complex, pro-level apps, microapps are singularly focused to make work easier. As a function within the Citrix Cloud console, Microapp Page Builder connects to legacy, on-premises, and SaaS systems to allow for easy creation of streamlined user workflows.

Security & Performance Features.



End-to-End Security

Enables network security, identity management, and web filtering thanks to a Secure Digital Perimeter.



User Behavior Analytics

Detects anomalies in user behavior and takes immediate action in order to mitigate risk.



Performance Across Constrained Networks

Provides optimum access to available networks, no matter how Citrix workloads are delivered to users.



Single Administrative Console

Allows management of all functions of Citrix Workspace, whether deployed on public, private or hybrid clouds.



Secure Citrix Workspace Browser

Redirects risky internet browsing activity to an isolated, cloud-hosted browser.



Cloud App Control

Protects IP and increases control over user actions as they access SaaS applications.



Largest Library of Supported Peripherals

Includes printers, audio recorders, webcams, signature pads and more.



Would Your Workforce Benefit from Citrix Workspace?

- Does your company have remote employees?
- Does your company use SaaS applications?
- Do any employees utilize five or more apps on a regular basis?
- Does your current technology force employees into constant context switching?
- Do your systems require quarterly password changes?
- Have you ever had to undo or advise against user workarounds?
- Has your security perimeter outgrown your governance capabilities?
- Is your company's technology lagging behind consumer technology?



Only **57%**
of employees always work in
a location that is similar to that
of their coworkers.

Source: Gallup: State of the American Workplace, 2017



Choose Where to Begin.

Implementing Citrix Workspace in your environment doesn't have to be an all-or-nothing proposition. Look at your company's most important use case and start from there.

The bottom line is that every organization can benefit from the right kind of modern digital workspace technology. Discover how Citrix Workspace improves the employee experience and drives better productivity and engagement.

For more information about Citrix Workspace, visit <https://www.citrix.com/products/citrix-workspace/> or contact your local sales representative or business partner.